



SPERM WIZARD®
MODIFIED PAPANICOLAOU STAIN PROCEDURE
Item# SW500 (also CUKTCYP)

PRINCIPLE: This stain procedure delineates the acrosome, head, mid-piece, and tail of sperm.

SPECIMEN: Semen smear fixed in 95% Reagent Alcohol or cytology fixative.

PROCEDURE NOTES:

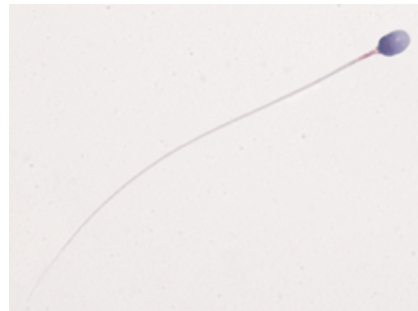
1. For Tap water rinse steps, submerge slide into dish filled with tap water and then place the dish under a gently running tap for the time indicated.
2. Shake slide gently between changes to remove excess liquid and prevent carry over into next dish.
3. Change alcohols and Master*Clear when discolored for best stain clarity.
4. **IMPORTANT: Change all rinse waters between staining runs!**

PROCEDURE:

1. Soak slide in one change of **95% Reagents Alcohol** for 15 minutes.
2. Soak slide in one change of **80% Reagents Alcohol** for 1 minute.
3. Rinse slide in gently running **Tap water** for 5 to 10 seconds.
4. Soak slide in one change of **Distilled water** for 1 minute.
5. Soak slide in **Modified Mayer's Hematoxylin** for 5 minutes.
6. Rinse slide in gently running **Tap water** for 3 minutes.
7. Soak slide in two changes of **95% Alcohol** for 20 seconds in each change.
8. Soak slide in **EA-50 Cytology Stain** for 5 minutes.
9. Soak slide in 4 changes of **100% Reagents Alcohol** for 20 seconds in each change. NOTE: Overfill containers to insure that all water is removed before the slides are placed into Master*Clear!
10. Soak slide in 2 changes of **Master*Clear** for 2 minutes in each change.
11. Soak slide in 1 change of **Master*Clear** for 3 minutes.
12. Coverslip immediately using **Cover*Safe**.

EXPECTED RESULTS:

Sperm Head: **PURPLE**
Acrosome: **LIGHT PURPLE**
Mid-Piece: **RED**
Tail: **RED to REDDISH-BLUE**



An atlas of sperm morphology and training in sperm classification is available from Fertility Solutions as SW400 *SPERMCONFIRM* Morphology Classification Method.

REFERENCE: Fertility Solutions Semen Staining Procedure (Modified Papanicolaou Stain)